



# Clifton Learning Partnership

Registered Charity no: 114275



**Annual Report 2020 and 2021**





# Welcome

Welcome to our Annual Report. Thank-you for your interest in the work of Clifton Learning Partnership.



As we all know 2020 and 2021 have been very difficult years for the whole world. Like everyone we have had to adapt, prioritise and learn new ways to deliver our mission.

In our last report (2019) we said that we would focus on supporting people through Brexit-related issues and continue to develop our outside spaces. We think that we have done this and so much more. Please read on to find out more.



# Thanks

We want to celebrate and acknowledge the support from and work with our partners and members of the community, and also:

Our inspiring  
staff team

Our  
dedicated  
volunteers

Our  
conscientious  
trustees

Our  
imaginative  
funders

Our hard working and  
supportive partners,  
including the team at  
EMAG Ltd





## Our vision

A strong and cohesive local community which is safe, healthy and skilled; in which people contribute and participate.



## Our mission

Clifton Learning Partnership exists to support the local community to increase its capacity in order that it can give every child and family a chance to succeed.

## Our values

It is important to us that we work in such a way that we are mindful of:

- Being human in our response at all times.
- Being grounded in our work because we believe that it is right.
- Working with and being relevant to the community and our partners.



# Our strategic aims

To make the community stronger and less vulnerable to exploitation.

To improve the basic skills of adults in order to help them to access employment opportunities, at every level.

To reduce issues of poverty, and thereby reduce immediate stressors on families.



To support the community to improve the environment in which we live and work.

To improve the basic skills of children and young people and broaden their ability to have equality of access to 'educational' opportunities.



# Outside Spaces

At the beginning of 2020 members of the community told us that they would like some outdoor gym equipment. With the support of local Councillors, Sport England and the PCC we have bought and installed the equipment. Several members of the community were trained to act as coaches for others. Sadly, the pandemic meant that this hasn't been used as much as we would like yet but plans are in place for 2022.



In order to make sure that we could deliver safely to young people at times when Government guidelines allowed we invested in an outdoor classroom, which has been well used for a variety of purposes including drumming workshops and as Santa's grotto!





# Outdoor Spaces



Our volunteers stoically continued to maintain our garden/allotment throughout the pandemic and it has even been enhanced by the addition of a bee hive, and the (small scale) production of our own honey. We are hoping for another hive in 2022.





# Supporting people to gain Settled Status after Brexit



We were pleased to be funded by the Home Office and RMBC to support people to maintain their right to remain in the UK after Brexit. This has enabled us to support over 3000 people directly to apply for Settled Status. Over 12,000 people have applied in Rotherham and we are proud to say that we have supported a quarter of this total. We have also spent time raising people's awareness about the need to apply and helping other agencies to promote this work too.



As part of this work we have worked with Roma Support Group nationally to raise awareness of the issues that Roma people face and we have worked to ease these pressures.



## Supporting people to gain Settled Status after Brexit



The deadline for applications came and went in June 2021 but we have continued to support people to apply late where they can and also support people to keep their status up-to-date and understand their rights to access benefits, apply for jobs, seek tenancies and use the health service.



"It can be seen that you are a good team that is trying to help and I am glad that you exist. I wish you all the best, from Blackburn." Facebook user



# Access to Food

When the pandemic hit we strengthened our role as 'Food in Crisis' partners in Rotherham with other voluntary sector organisations and RMBC. During 2020 and 2021 we gave out 580 food parcels to over 53 families. We took on new volunteers to help us collect and distribute food and essentials during the lockdowns. The whole of Zone 1 became a food bank!



As we moved into 2021 we decided that we wanted to do more and do it differently, and we started planning to open a social supermarket. We received invaluable support from partners, including Fare Share, Rotherham Minster, and Voluntary Action Rotherham. We secured some funding from generous funders, AB Charitable Trust and The Talbot Trust and managed to get a new building put up to deliver from. Watch this space in 2022 as this project grows

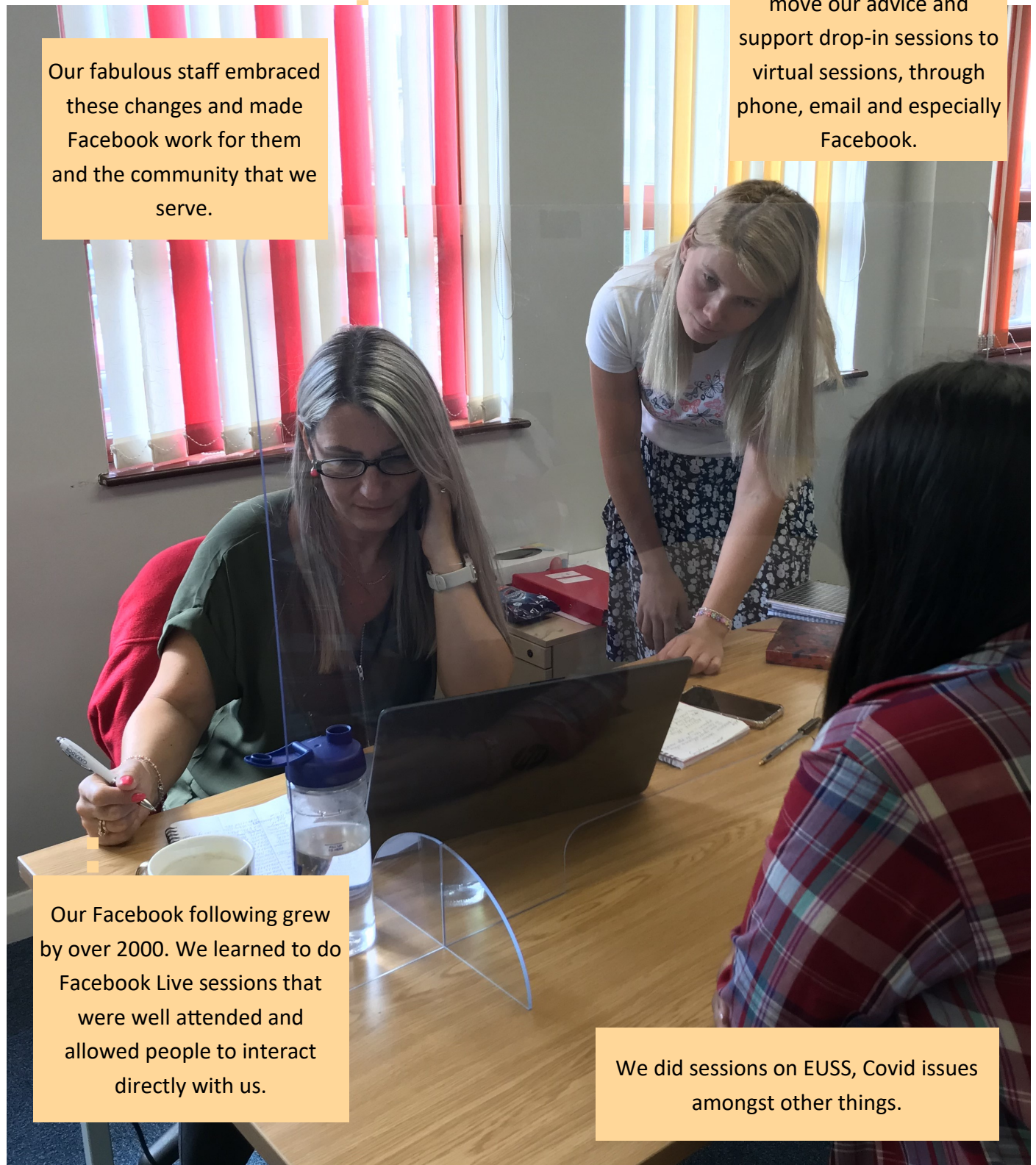




# Supporting people...through Covid

Part of our adaptation as the pandemic and lockdowns hit was to move our advice and support drop-in sessions to virtual sessions, through phone, email and especially Facebook.

Our fabulous staff embraced these changes and made Facebook work for them and the community that we serve.

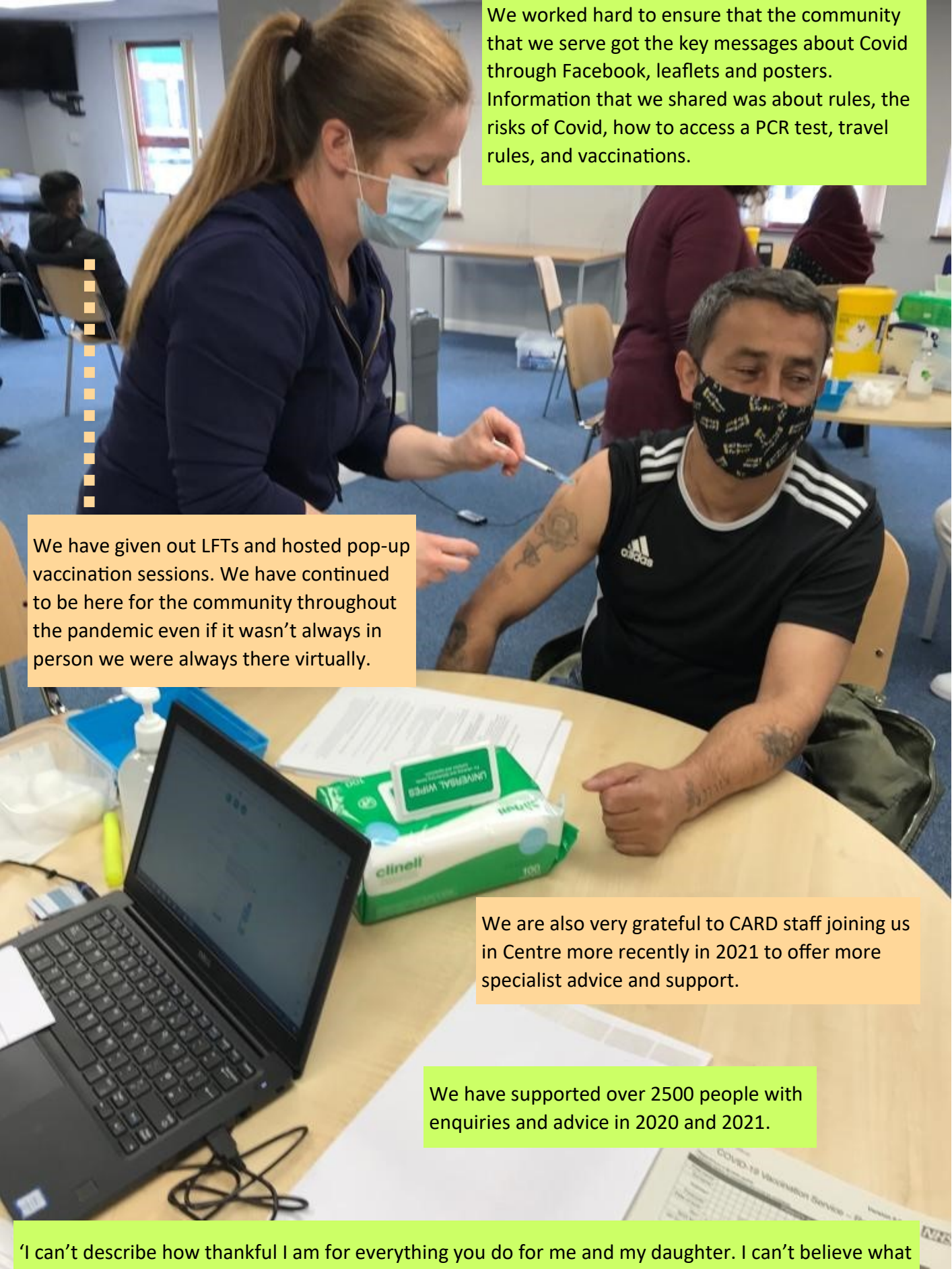


Our Facebook following grew by over 2000. We learned to do Facebook Live sessions that were well attended and allowed people to interact directly with us.

We did sessions on EUSS, Covid issues amongst other things.

'Thanks to the staff of CLP Facebook for their help, they are smart and nice ladies, they are trying to help everyone' Facebook follower





We worked hard to ensure that the community that we serve got the key messages about Covid through Facebook, leaflets and posters. Information that we shared was about rules, the risks of Covid, how to access a PCR test, travel rules, and vaccinations.

We have given out LFTs and hosted pop-up vaccination sessions. We have continued to be here for the community throughout the pandemic even if it wasn't always in person we were always there virtually.

We are also very grateful to CARD staff joining us in Centre more recently in 2021 to offer more specialist advice and support.

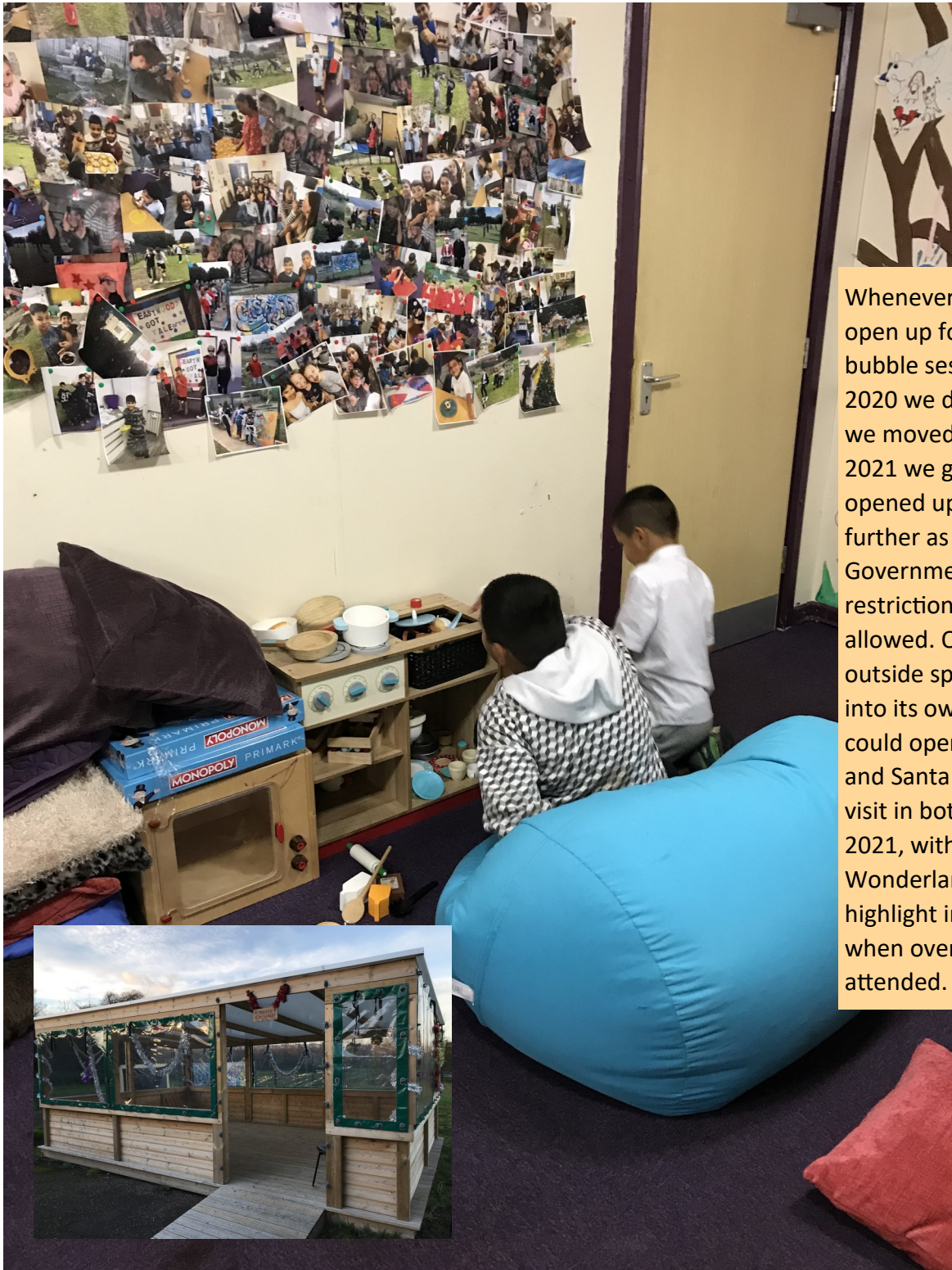
We have supported over 2500 people with enquiries and advice in 2020 and 2021.

'I can't describe how thankful I am for everything you do for me and my daughter. I can't believe what great and helpful people in the UK are. I went from house to house in Poland asked for help, nobody gave me anything. Thank-you so much for everything'. Service user



# Supporting young people

The young people that we support have been resilient and strong. During the height of the pandemic we worked with partners, including YMCA My Place to distribute packs for young people to use at home, and we did detached work to start to re-engage further as we were allowed.



Whenever we could open up for family bubble sessions in 2020 we did so and as we moved through 2021 we gradually opened up sessions further as Government restrictions allowed. Our fabulous outside space came into its own once we could open up further and Santa came to visit in both 2020 and 2021, with Winter Wonderland being a highlight in 2021, when over 30 families attended.

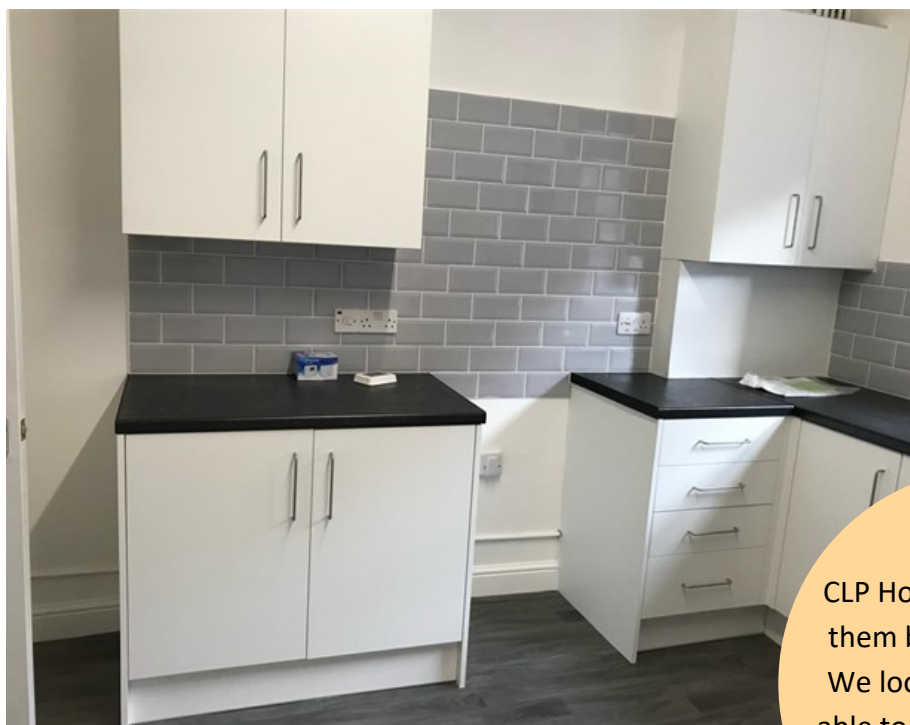




## Homes in Eastwood



CLP have always worked to improve the experience of tenants locally, and we are delighted to share the news of the launch of new company at the end of 2021, CLP Homes, which has bought two houses.



CLP Homes Ltd anticipates them being let very soon. We look forward to being able to share more news in 2022.



## Sad news

It is with great sadness that we commemorate here the lives of two great advocates for Eastwood and partners of CLP.



Steph McIntyre, PCSO, died in June 2020. She contributed so much to the community through her humanity and love for life. We were proud to re-name Zone 2 in her honour.



Mick MacCafferty, one of our dedicated garden volunteers who always had a smile on his face and took life as it came died in December 2020. We held a small ceremony of remembrance with Mick's family and we have dedicated a garden bench in his memory.

We would also like to acknowledge the members of the community who lost their lives during this time.





# Hope for the future

Through all the sadness and difficulty we want to celebrate the resilience of the community that we serve and the dedication and adaptability of our staff and volunteers. They have been remarkable. We do look forward to 2022 with new hope and continued energy and desire to continue to progress.



We anticipate the opening of Eastwood Pantry our social supermarket, the appointment of new staff to deliver further new opportunities, especially supporting people to develop skills to enable them to seek work, and the development of CLP Homes.





## Organisation Details

Clifton Learning Partnership is a Company Limited by guarantee with no share capital (Company No. 7566749) and a Registered Charity (Charity registration No. 1142675). Both were incorporated in 2011.

The registered address is The Caretaker's House, St Ann's J&I School, St Leonard's Road, Rotherham, S65 1PA.

Contact Details: [www.clifton-partnership.org.uk](http://www.clifton-partnership.org.uk), tel. 01709 829087, Twitter: @CLPartnership

## Objects of the Charity

The objects of the company and charity were changed in August 2018 to read 'To develop the capacity and skills of the socially and economically disadvantaged community of Rotherham East Ward and its environs, in such a way that they are better able to identify and help meet their needs and participate fully in society.'

## Accounts

Accountancy support and the annual accounts are provided by Hart Shaw, Accountant, Europa Link, Sheffield Business Park, Sheffield S9 1XU. [www.hartshaw.co.uk](http://www.hartshaw.co.uk)

